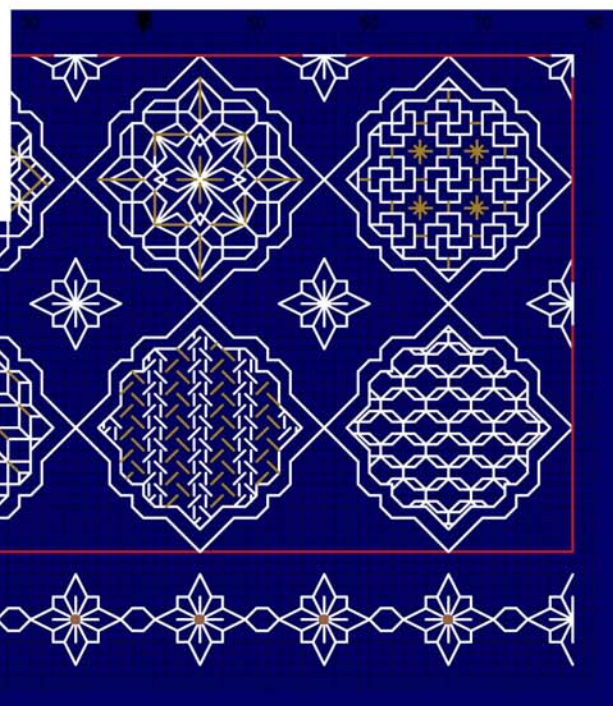
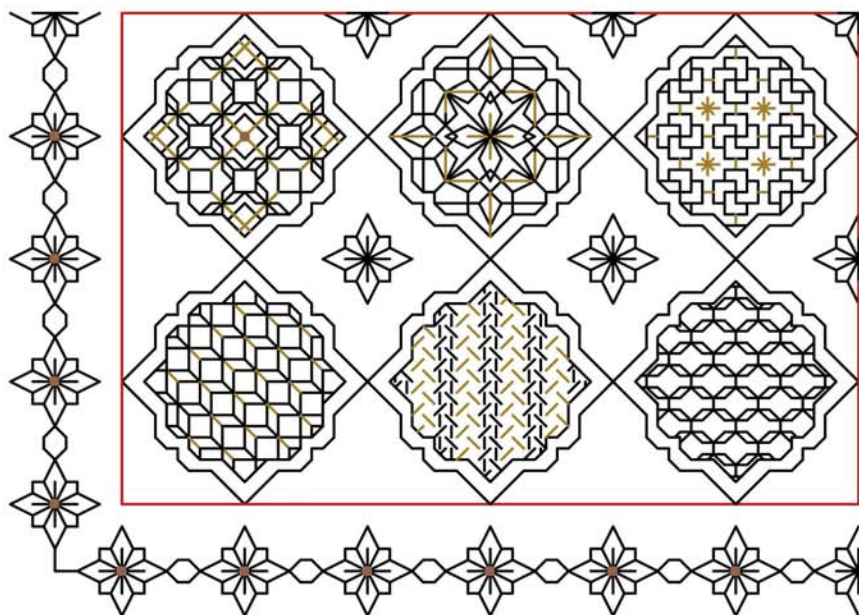
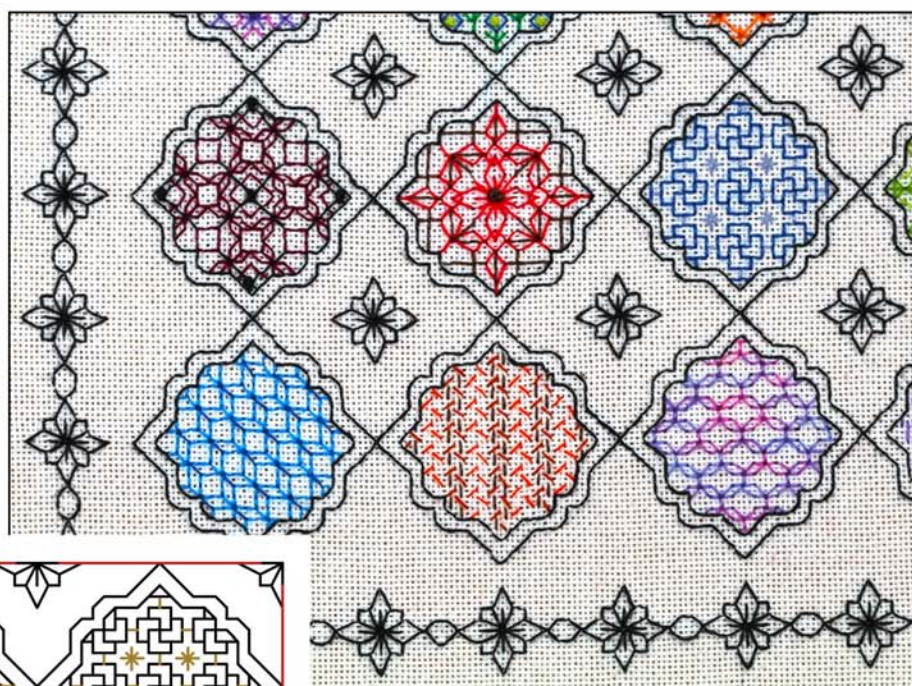


# BOX OF DELIGHTS

Blackwork Journey - Designs by Elizabeth Almond  
Block 5 Patterns 25 - 30



## Block 5 - Patterns 25 - 30

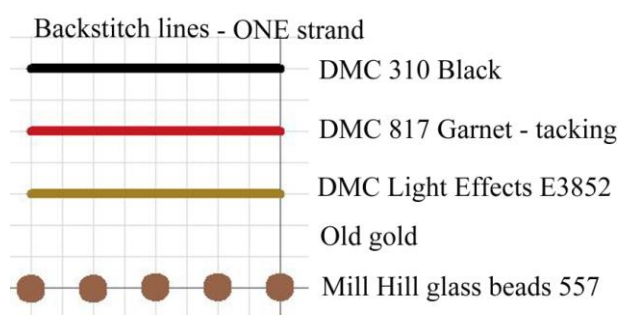
Grid Size: 80W x 58H

Design Area: 5.43" x 3.86" (76 x 54 stitches)

Three different colour schemes are included:

- Black and Gold with gold metallic thread and gold beads or copper thread and copper beads.
- Navy and white with gold metallic thread and gold beads or silver thread and silver or pearl beads.
- Coloured Delights - use scraps of thread to create each pattern in a different colour. Use variegated threads for Pattern 9.

### Key - Block 5 Black and Gold



### Threads:

DMC 310 Black, one skein

817 Coral red or sewing cotton for RED tacking lines

DMC Light Effects Metallic E3852 Dark Gold, one reel

Mill Hill Glass beads 557 Gold, one packet

### Block 5 Navy

DMC White, one skein

DMC Light Effects Metallic E3852 Dark Gold, one reel or E168 Silver

Mill Hill Glass beads 557 Gold, one packet or 2022 Silver

### Key - Block 5 Coloured

DMC Threads – various colours as desired. Follow the picture to help in colour selection.

Tapestry needle no.24

Beading needle

Small ring or frame if required.

### Stitches used:

**Back stitch** – worked in one strand of thread over two threads of fabric unless otherwise indicated on the chart



**Cross stitch** - worked in two strands of thread, over two threads.

**Colonial knots** - worked in **two strands**

(See 'Introduction' for stitches (Page 7))

Method:

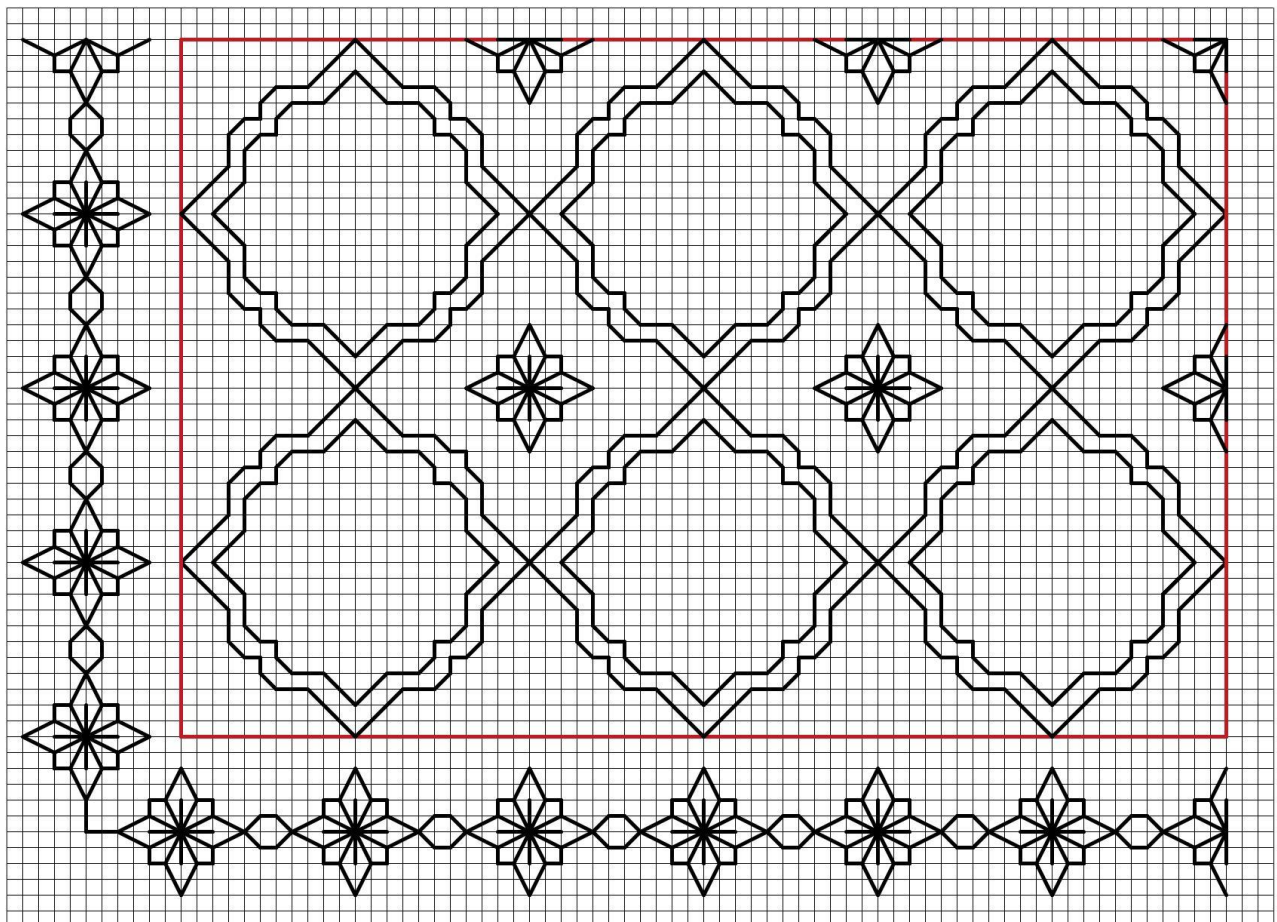
1. Follow on from Block 4 placing the next six patterns in the correct position on the chart. For ease of working there are SIX blocks of six designs. To help line the blocks up a tacking line in RED surrounds the six blocks. This is optional but will help to align the blocks correctly.

2. The outline for each sweet is worked in backstitch Black 310 or white as appropriate to the colour scheme.

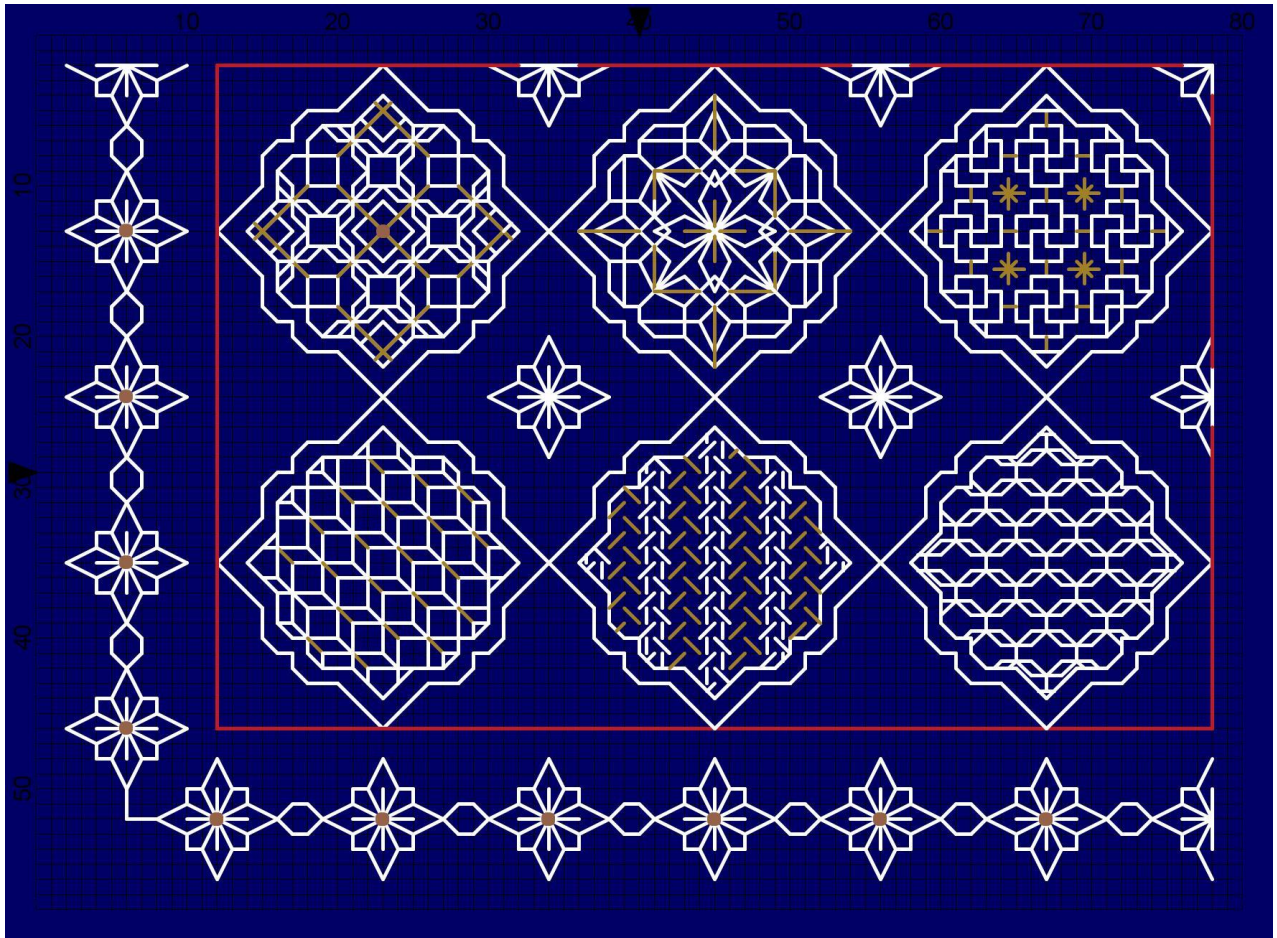
The filler or 'diaper' patterns are added once the outline has been completed using the colour scheme chosen (see charts and jpgs.)

*Block 5*

*Bottom left hand side*



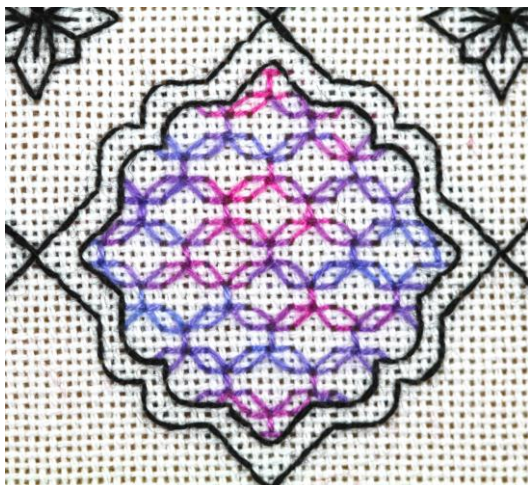
*The framework is the same for all variations*



*Block 5 Navy*

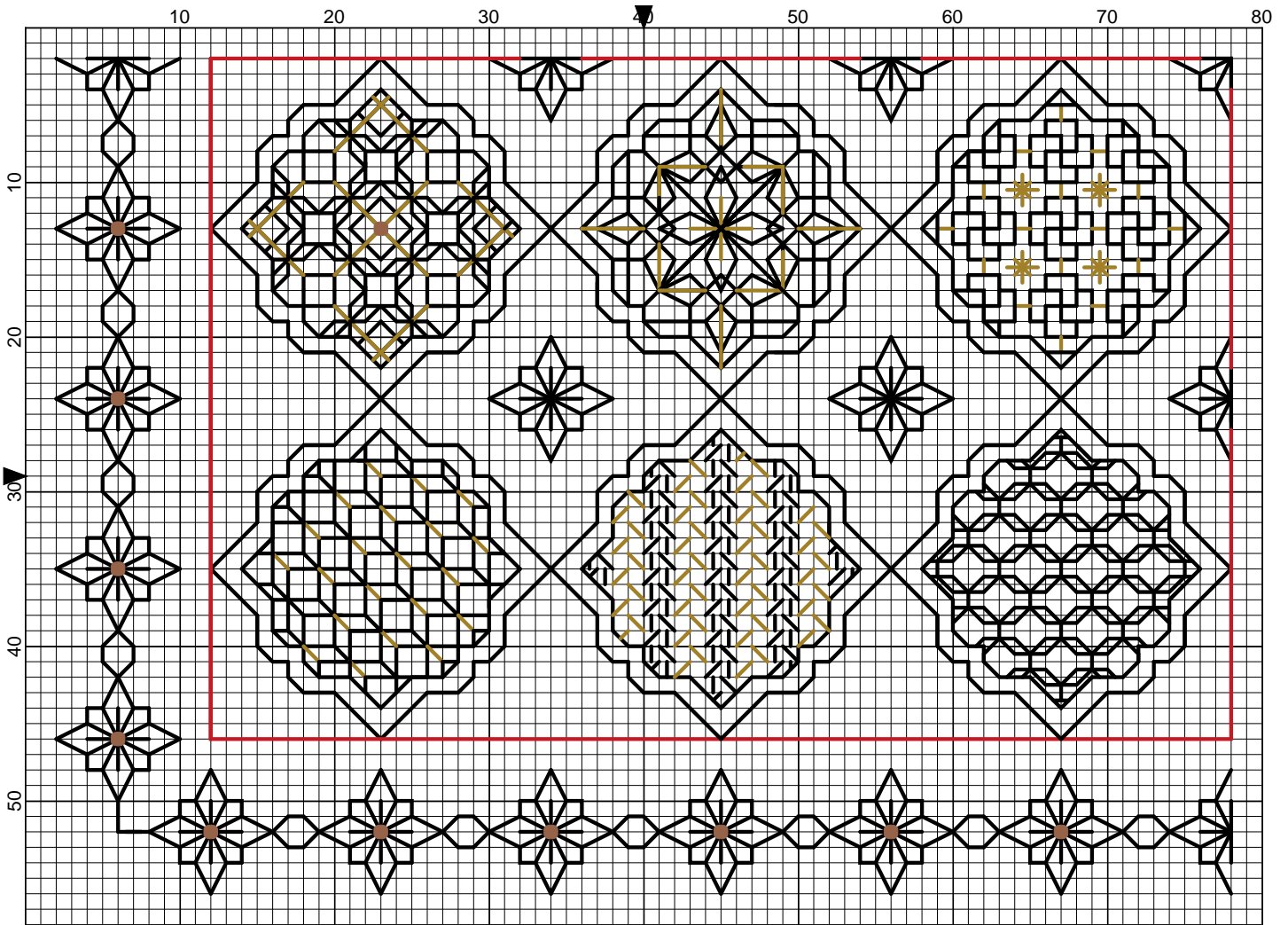
The gold metallic threads can be replaced by DMC E168 Silver and Mill Hill glass beads 2022 Silver in place of the gold beads.

Use the chart for Block 3 black and gold when working this version. This design is also suitable for black, emerald green or red fabric.



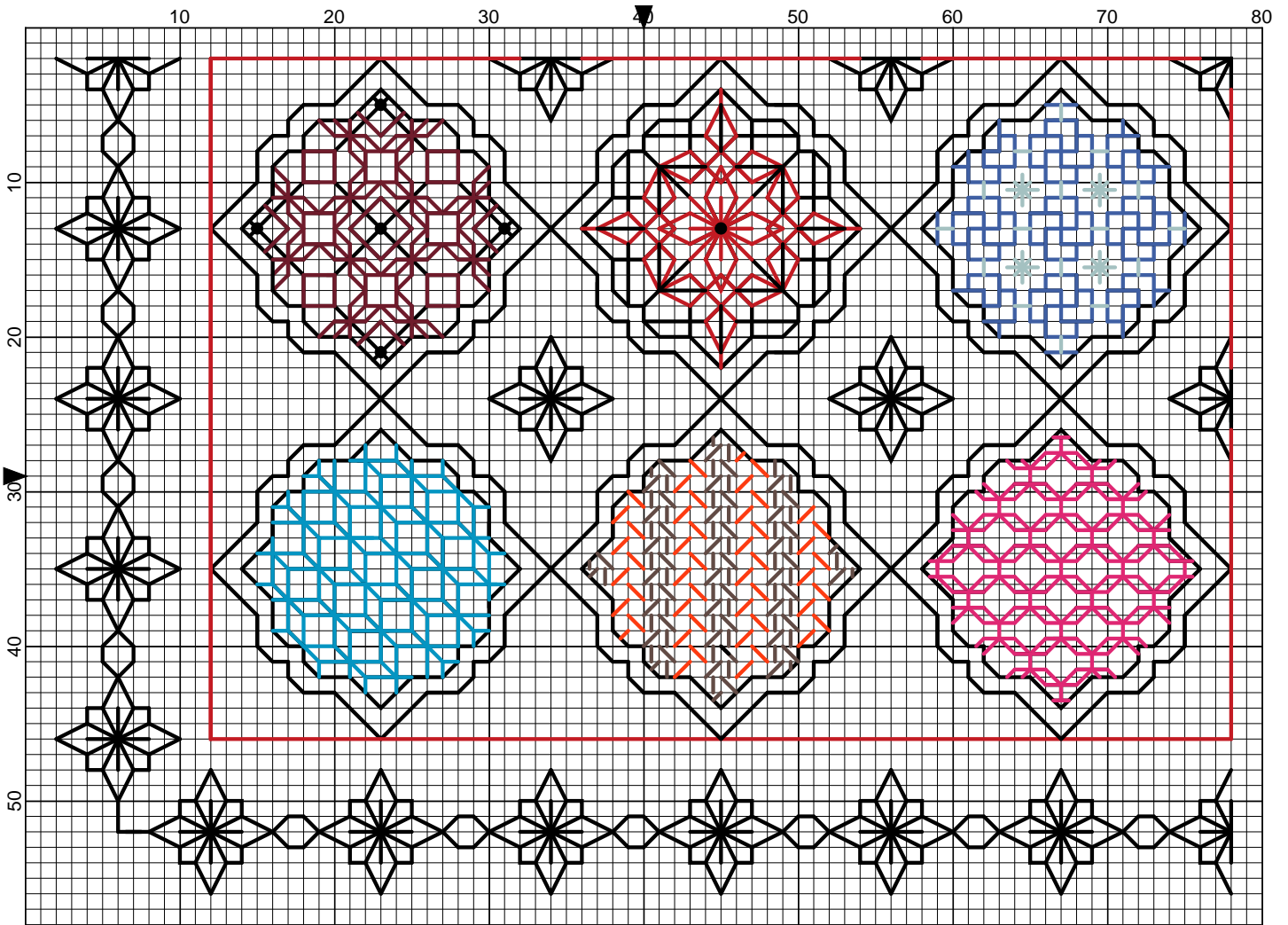
*When using variegated threads check that the colour is bold enough to stand out on the fabric. If the thread is too pale the pattern will merge into the background!*

Block 5 Black and Gold Patterns 25 - 30



Elizabeth Almond

Block 5 Colour Patterns 25 - 30



Elizabeth Almond



# Block 5 Colour Patterns 25 - 30

